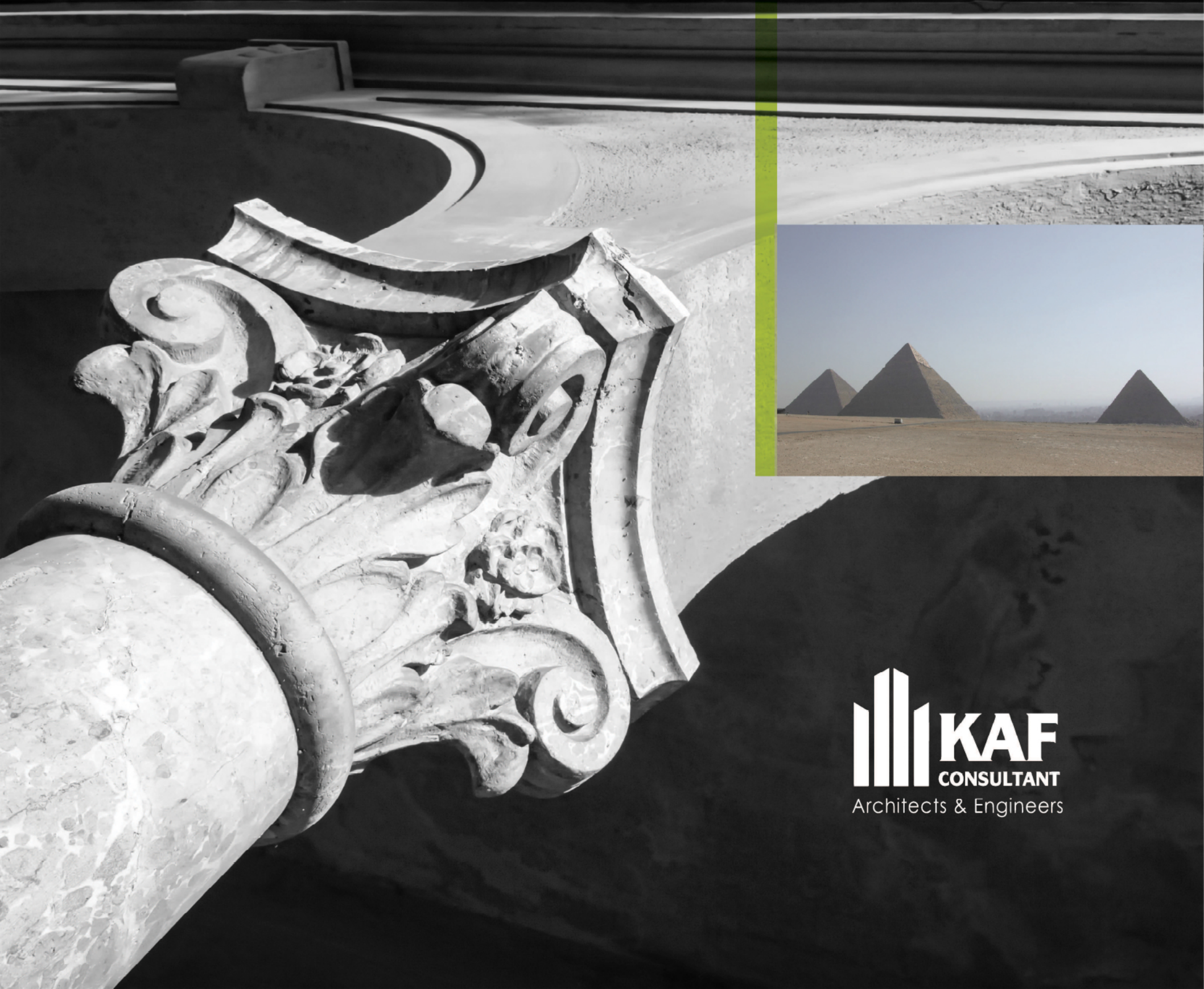




KAF

I n s p i r e d b y N a t u r e & T r a d i t i o n s . . .



KAF is a Cairo-Egypt based Consultant Architects and Engineers firm that creates thoughtful, inspired Architectural and Interior Designs. The firm brings a unique problem-solving approach and the most effective results-oriented consultation to projects of various scales, our Scope of work is ranging from Design, Project Management, Technical Support to Construction Supervision.

“Our work should help
making our environment
a better place
for existence”



about us



KAF Consultant is a multi-disciplinary consultancy group established in 2015. The firm brings a unique problem-solving approach and effective result oriented consultation services for projects of various scales.

vKAF scope of services ranges from Design, Project Management, Construction supervision to Technical Support, KAF provides engineering and architectural consulting services for planning, design and construction to both public and private sector Clients, nationally and internationally, in a timely, cost effective and innovative manner while providing quality and responsive services by a highly qualified and experienced staff.

KAF provides a broad spectrum of professional consulting services, allowing us to service our Clients during each phase of a project, including advance/preliminary planning services, design and construction oversight.



WHO WE ARE..

KAF Founders lead a dedicated team of designers and professionals whose aim is to create and refine unique, thoughtful concepts and develop them into livable environments. KAF Founders together with the team draw on their collective experience that covers all the project stages to provide our partners with solutions that are cost-effective, faster, easier, sustainable and safer to build.

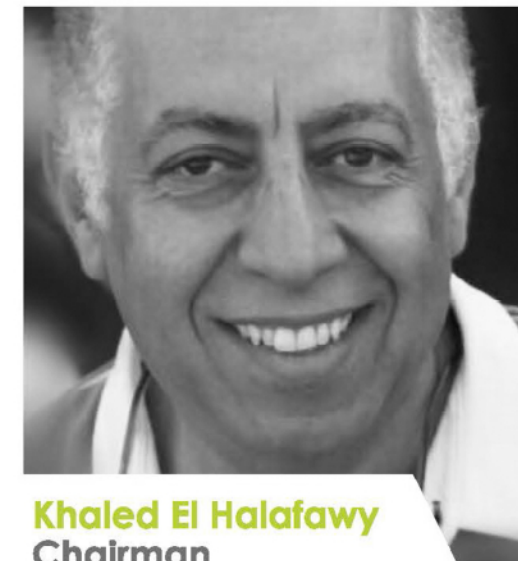


founders



Ehab El Ansary
Vice President

Mr. Ansary enjoys almost 30 years of professional experience, including several leadership positions with prominent firms in the industry. Past positions include Projects' Director and Head of Architectural Department at EHAF Consulting Engineers for a period of 11 years .
Mr. Ansary knowledge, experience and creations are always an addition to the development plans of mega projects in various fields.
Mr. Ansary holds a Bachelor's degree in Architecture from Ain Shams University.



Khaled El Halafawy
Chairman

Mr. Khaled has more than 32 years of experience in the field of architecture and interior design. Mr. Khaled expertise covers the whole project life cycle as he has been involved in several projects in Egypt and Gulf Countries, In addition to heading KAF, Mr. Khaled is the Chairman of the El Halafawy Furniture Company.



Mohamed Farouk
Chief Executive Officer

Mr. Farouk joins KAF team with 21 years of experience in design management field, successfully completed and handed over a number of integrated and high profile projects in Egypt, KSA and Libya. Mr. Farouk previous experience includes working as a Deputy Head for Architecture Department and Project Manager at EHAF Consulting Engineers and Design Manager at Al Ahmadi Consultants, KSA. Mr. Farouk holds a Bachelor's degree in Architecture from Mansoura University.



DIVIDING TASKS & MULTIPLYING SUCCESS



OUR TEAM

SERVICES

Our Services

At KAF, we are committed to providing effective professional engineering solutions to meet the diverse requirements of our clients whilst maintaining high aesthetical and professional standards. We provide a broad spectrum of professional engineering covering all project stages and disciplines.



Consultancy Services

SCOPE OF SERVICES

- Master Planning Design
- Architecture Design
- Interior Design
- Structure Design
- Electro-Mechanical Design
- Landscape Design
- Infrastructure Designs

Technical support

Construction Supervision

Design Services

Project Management

FIELDS OF PRACTICE

Our main target is to balance functional and aesthetic values to develop projects that simultaneously meets the needs of the end-users, operators and owners. We work hard to consider and balance the various conflicting needs of the project stakeholders to ensure that the project design is safe, efficient, cost effective; and maintains their utility and charm through time.



A BROAD PROJECTS SPECTRUM

Hospitality
Mixed-Use Developments
Residential Compounds
Retail and Leisure
Educational
Healthcare
Office Parks
Industrial
Sports Complexes





STEIGENBERGER
HOTELS AND RESORTS



FEATURED PROJECTS

FOUKA BAY

Ras El Hekma , Egypt

Fouka Bay spreads blissfully on Ras El Hekma's coastline to proudly crown the best spot in the North Coast's crystalline shoreline. Comprising of a variety of luxurious and architecturally appealing waterfront villas, double decked twin houses and townhouses, standalone chalets, spacious cabins and bungalows, visitors can enjoy 360 degrees' views of unobscured water and an idyllic beach lifestyle year-round.

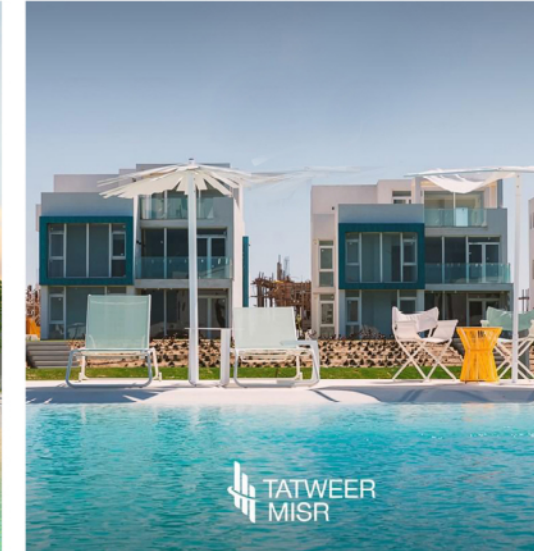
Fouka Bay spreads on 950,000 m2 with 800 meters of white sandy beaches and %85 of the plot area designed as green spaces and water facilities.

The project will be developed in 2 phases; each phase will have an area approximately equals %50 of the land area. Phase 1 includes 400 residential units divided between 6 villas' prototypes, 2 twin houses' prototypes and 2 chalets buildings prototypes.

In addition to the residential units; Fouka Bay includes a five-star hotel, spa and gym facilities, brand name retail outlets and international restaurants, internal courts and a crystal lagoon that runs through the compound.

Project Size : 1,200 residential units
Project Budget : 3 Billion EGP
Client : Tatweer Misr
Scope of Work : Project Lead Consultant
Construction Supervision Consultancy Services

KAF
CONSULTANT
Architects & Engineers



FOUKA BAY

FOUKA BAY

Ras El-Hekma, EGYPT





FOUKA BAY

Ras El-Hekma, EGYPT



FOUKA BAY

FOUKA BAY

Ras El-Hekma, EGYPT





FOUKA BAY

Ras El-Hekma, EGYPT

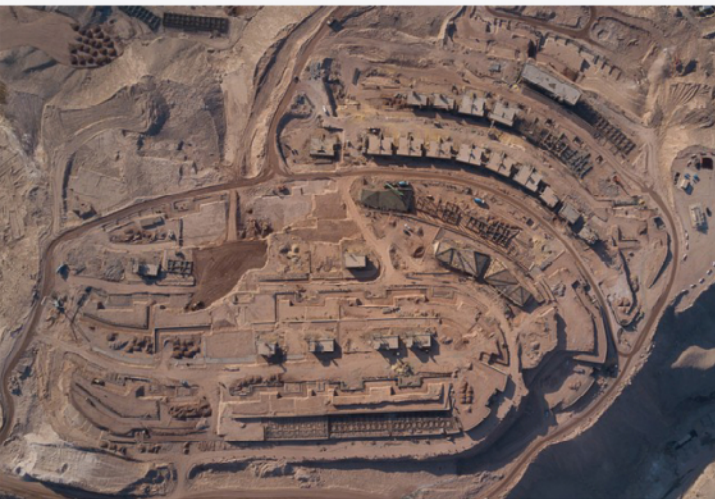


FOUKA BAY

FOUKA BAY

Ras El-Hekma, EGYPT





Project Size : 2.2 Million Square Meters
Client : Tatweer Misr
Scope of Work : Construction Supervision Consultancy Services



Il Monte Galala

Ain Sokhna, Egypt

IL Monte Galala articulates a unique living experience not offered elsewhere. Set over 5 different altitudes and designed with varied communities in mind, each of IL Monte Galala's distinct zones reflect the unique character and environment of the site, setting it to become an international destination by choice.

IL Monte Galala spans over 2.2 million m2 lapping a 1.3 km shoreline and comprises a 45,000 m2 of crystal clear lagoons. KAF Consultant is appointed as the Construction Supervision Consultant and is responsible for Architectural finishes for Zone A.

Zone A is the first and largest phase on IL Monte Galala Development. It spreads on approximately 450,000 m2 and constitutes around %20 of the project. Zone A includes 150 buildings with a total of 750 fully finished units. Each prototype unit has 3 different levels of finishing according to the Client requirements. It is planned to finish Zone A by end of 2019.

IL MONTE GALALA



IL MONTE GALALA

EL SOKHNA, EGYPT



IL MONTE
GALALA
SOKHNA



TRANSFORMING
SOKHNA





IL MONTE GALALA

EL SOKHNA, EGYPT





Steigenberger Lessan Hotel

Damietta, Egypt

Located at the unique intersection point between the Mediterranean Sea and River Nile;

Steigenberger Lessan Hotel is developed as the first 4-star hotel in the city. Developed by the Holding Company for Tourism & Hotels "HOTAC"; the hotel building is developed to include Ground floor, 6 floors and Roof floor on a plot with area equals to 4,200 m² with total built up area of 17,650 m².

The hotel includes 153 keys with 4 prototypes which are: Classic Guest Room, Corner Guest Room, Main Suite and Beach Suite. The hotel facilities include main restaurant, coffee shop /bar, 2 ballrooms, 2 meeting rooms and health club.

The hotel is currently in the construction stage and it is planned to operate in 2018.

| | |
|----------------|--|
| Project Size | : 153 Keys Hotel |
| Project Budget | : 200 Million EGP |
| Client | : Holding Company for Tourism & Hotels "HOTAC" |
| Scope of Work | : Complete Design including Interior Design & FF&E Construction Supervision |

KAF
CONSULTANT
Architects & Engineers





After Construction



Steigenberger
Lessan Hotel
Damietta, Egypt



Steigenberger Lessan Hotel

Damietta, Egypt

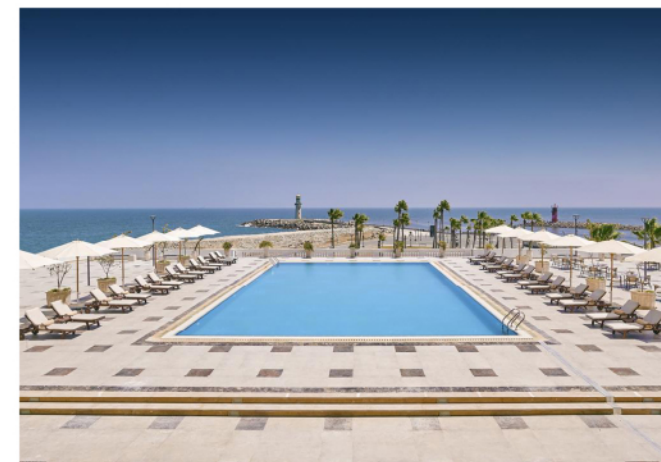
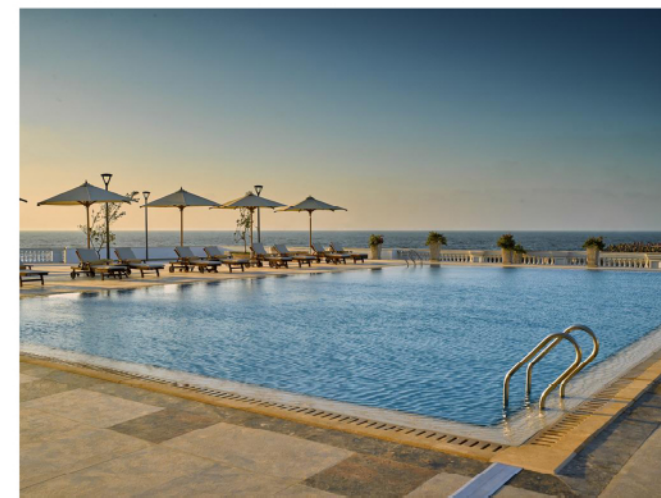




Steigenberger
Lessan Hotel
Damietta, Egypt



STEIGENBERGER
HOTELS & RESORTS



Steigenberger Luxor Hotel,

Steigenberger Luxor Resort (formerly Sheraton Luxor Resort) is located on the banks of the River Nile; the luxury resort has 266 Rooms with 6 prototypes (Classic Garden Room, Classic Bungalow Room, Classic Nile Room, Superior Room, Junior Suite and Presidential Suite). The resort has landscaped open spaces with area of about 32,000 m², 2 outdoor pools, 6 Food & Beverage outlets, meeting rooms and Ballroom overlooking the River Nile.

KAF Consultant were appointed by ACHTI (Hotel Owner) to be responsible for the hotel renovation. The

renovation plan includes complete upgrade of the public areas including the following:

Main Entrance & Hotel Lobby

Lobby Bar & Coffee Shop

Main Restaurant

Nile Ballroom

Specialty Italian Restaurant

Upgrading Hotel Rooms

| | |
|----------------|--|
| Project Size | : 266 Guest Rooms |
| Project Budget | : 150 Million EGP |
| Client | : Arabian Company for Hotels and Tourism Investment |
| Scope of Work | : Design Consultancy Services Construction Supervision Consultancy Services |



STEIGENBERGER Luxor Hotel

LUXOR, EGYPT





STEIGENBERGER Luxor Hotel

LUXOR, EGYPT

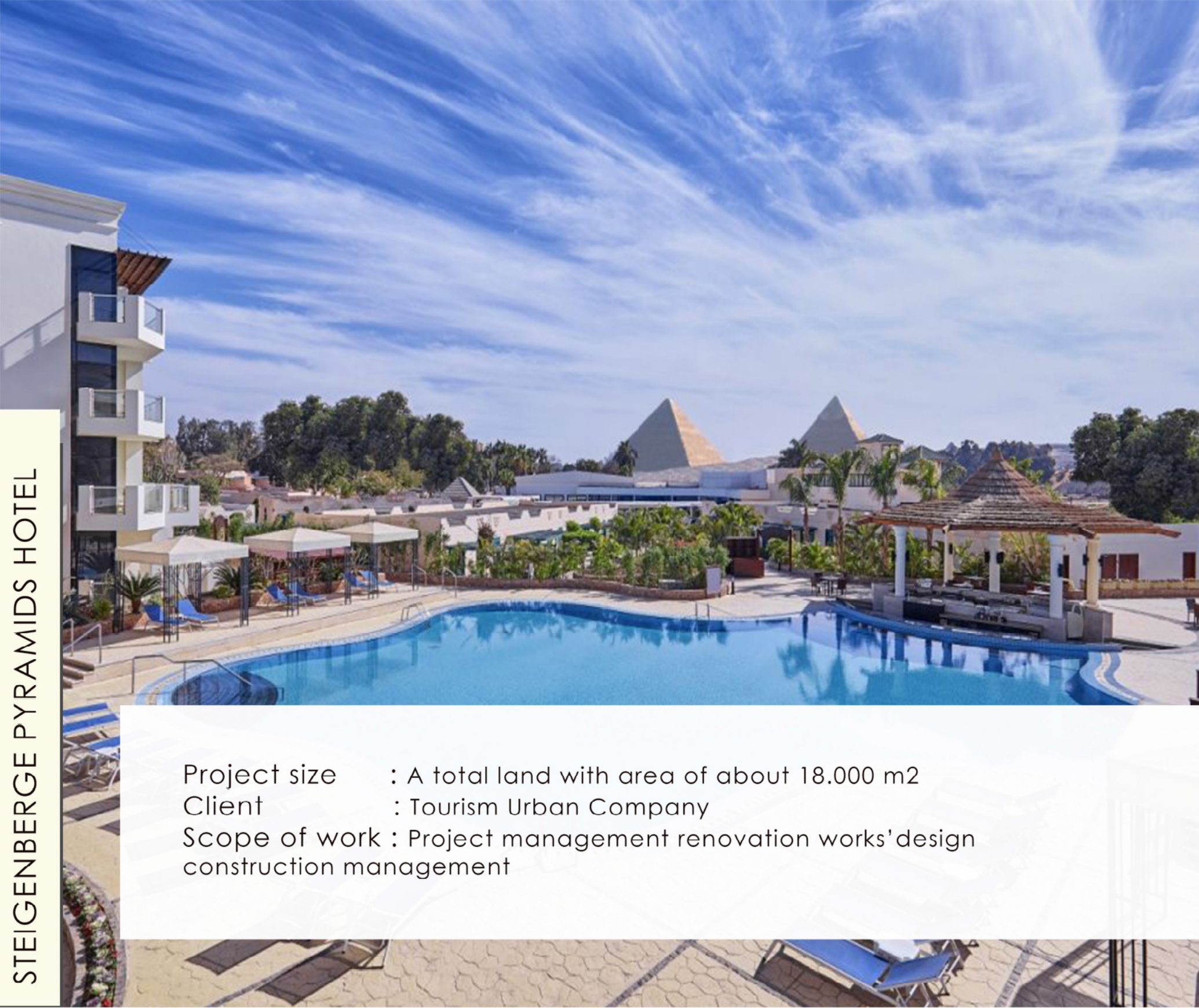




STEIGENBERGER Luxor Hotel

LUXOR, EGYPT





Project size : A total land with area of about 18.000 m2
Client : Tourism Urban Company
Scope of work : Project management renovation works' design
construction management

Steigenberger Pyramids Hotel,

Pyramids Hotel is located in a prominent location facing the Great Pyramids and the Grand Egyptian Museum. Steigenberger Chain has been appointed by the Hotel Owner as the Hotel Operator. The hotel is developed on a total land with area of about 18,000 m2. It includes: Main Building (1 floor), New Building (G+3), Guest Rooms (Bungalows Style), Swimming Pool Area and Tower Building.





STEIGENBERGER PYRAMIDS HOTEL

EL GIZA, EGYPT





STEIGENBERGER PYRAMIDS HOTEL

EL GIZA, EGYPT



STEIGENBERGER HOTELS AND RESORTS



Client : The Egyptian General Co for Tourism & Hotels (EGOTH)
Scope of Work : Construction Management
Construction Supervision Consultancy Services

Steigenberger Cecil Alexandria Hotel

opened in 1929. The hotel has a historical style. It is located at the Alexandria port in Saad Zaghloul square, Raml Station. The hotel consists of ground and four floors. The ground floor contains the public areas such as: (Concert Hall, Disco and Restaurant), The first floor consists of two meeting rooms and a bar. The rest of the floors contain the Hotel rooms, 85 rooms (82 rooms and 3 suites). The Egyptian General Company for Tourism & Hotels (EGOTH) is renovating and developing Cecil Hotel. Hany El-Siofy's office has carried out the special design work for hotel renewal and development. The construction works has been assigned to The project contractor: Inventors Arteriors International, which started on April 27, 2018, KAF Consultant in charge of the Project Management and Construction supervision Consultancy Services.





Project Size : 230 feddans including 14 factories
Project Budget : 200 Million EGP
Client : General Department for Military Works -
Ministry of Defence
Scope of Work : Complete Design including factories design

Al-Robeiky Industrial City

is located in prime location at cairo Eastern region, The city is being developed in line with the Egyption development plan and aims at establishing an integrated industrial zone to serve the military factories.

Al-Robeiky City is development on an area of 230 feddans (approx. 850,000 sqm) to include the following :

- 14 Industrial Factories

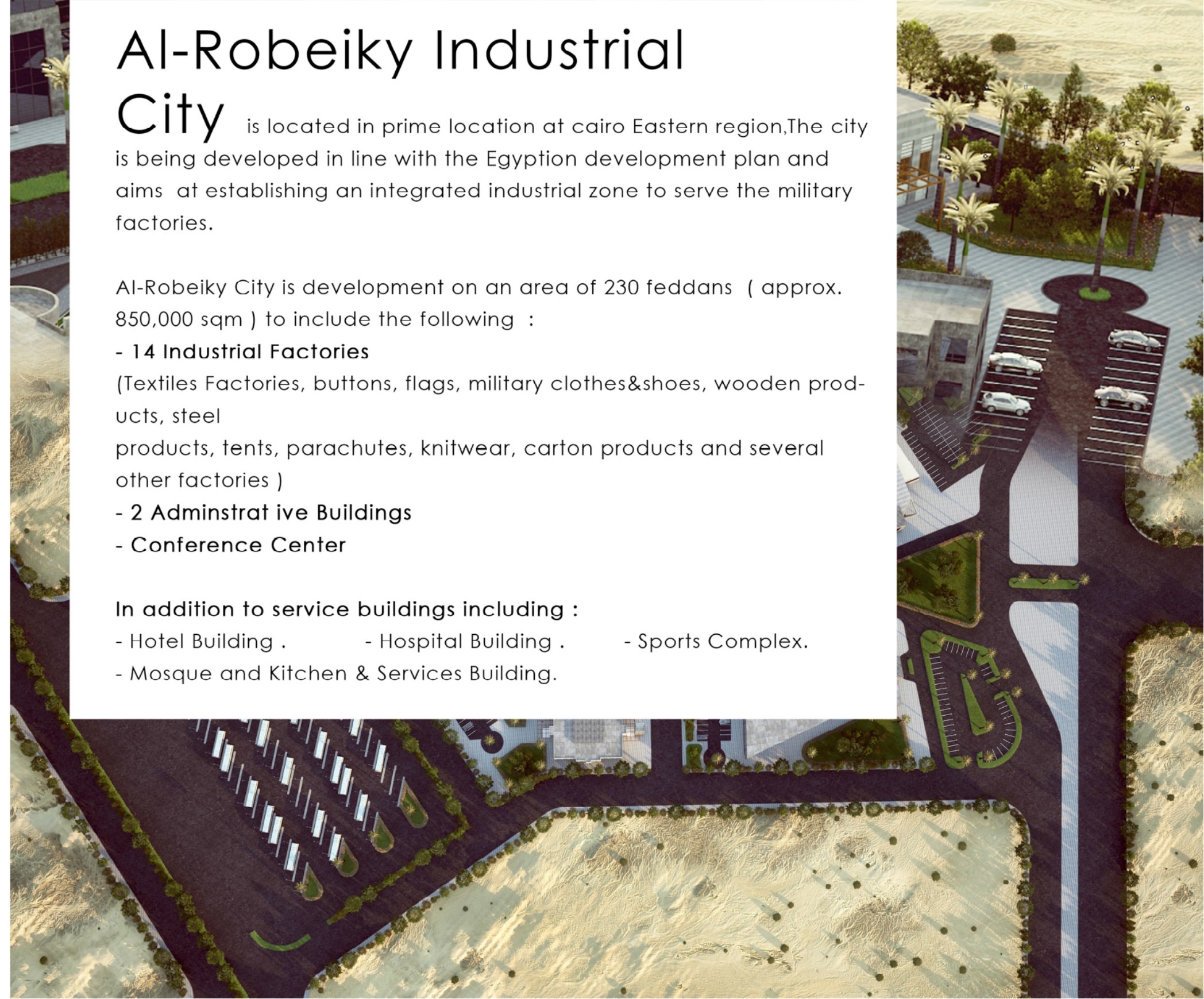
(Textiles Factories, buttons, flags, military clothes&shoes, wooden products, steel products, tents, parachutes, knitwear, carton products and several other factories)

- 2 Adminstrat ive Buildings

- Conference Center

In addition to service buildings including :

- Hotel Building .
- Hospital Building .
- Sports Complex.
- Mosque and Kitchen & Services Building.





Al-Robeiky Industrial City

CAIRO, EGYPT





Courts' Complex

New Cairo, Egypt

With capacity of more than 750 office spaces and 4 Court Halls each with capacity of 200 persons; The Ministry of Justice developed The New Courts' Complex is located at the 1st Settlement in New Cairo. The New Building is constructed on a plot equals to 10,000 m2 and with Built Up Area of 33,000 m2.

The building is composed of Basement, Ground and 3 Floors to include 4 Main Court Halls, Lecture Room with capacity of 100 personnel, several meeting rooms and office spaces with approximate capacity of 750 personnel. The basement is assigned for services, car parking and archive rooms.

| | |
|----------------|--|
| Project Size | : 4 Court Halls – 750 Office Spaces |
| Project Budget | : 180 Million EGP |
| Client | : Egyptian Ministry of Justice |
| Scope of Work | : Design Consultancy Services Construction Supervision Consultancy Services |



Courts' Complex

New Cairo, Egypt





Project Size : 220 Beds
 Project Budget : 1.1 Million EGP
 Client : Andalusia Group
 Scope of Work : Architecture & Engineering Design Services

Andalusia Hospital

In Jeddah-KSA in Jamah Area with total plot area of 6,500 m2 with about 59,000 m2 built up area. distributed as follow: 39,000 m2 in medical service. 20,000 m2 in multi-story parking.

New Andalusia general hospital is with capacity of 220 beds, contains all general Medical departments in addition to Oncology and cardiac services, the major departments included in the medical services provided in the hospital is as follow:

- * 220 beds distributed In patient wards, Intensive Care Units, Critical Care Units and Neonatal Care Unit.
- * 45 clinics in outpatient department
- * Endoscopy Department
- * Day Surgery Department
- * Obstetrical and Gynaecology Department
- * Imaging Department
- * Oncology Chemotherapy and Radiotherapy Department.
- * Surgery Department
- * Cath. Lap
- * Emergency
- * Pharmacy





Maadi Military Hospital Extension

Maadi, Egypt



HOSPITAL





Project Size : 292 Beds
Project Budget : 440 Million EGP
Client : General Department for Military Works - Military of Defence
Scope of Work : Design Consultancy Services
Construction Supervision Consultancy Services

Maadi Military Hospital

Is an Oncology Hospital; the project aims at adding a hospital building with additional capacity of 252 beds. An additional building will be connected to the existing hospital buildings that include basement, ground and 4 floors with total built up area equals to 21,600 m2.

Hospital components are as follows:

- Basement will include services such as Kitchen, Laundry, Pharmacy, stores and MEP Equipment
- Ground Floor will include 21 Out-patient clinics, 2 chemo-therapy units and administration offices
- Each of the Typical floors will include 63 hospital beds and an intensive care unit with capacity of 10 beds.

KAF is assigned as the project Main Consultant and the scope of work includes Medical Planning, architecture, MEP Systems, infrastructure and Landscape design. In addition to site supervision during the construction stage.





The Spine Residential Compound

Cairo, Egypt

Concept Proposal

Oriental for Urban Development invited KAF Consultant to submit a concept design proposal for their new residential development in Obour City. The master plan was designed on a land plot that is approximately equal to 75,000 m2 to include Twin Houses and Town Houses. In addition to the residential units, the project was designed to include commercial area, club house including Spa Center and Swimming Pool in addition to several outdoor and green areas.

Client : Orientals for Urban Development – (OUD)
Scope of Work : Concept Design Proposal





07 | file: layout-15.max | frame: 00000 | primitives: 4957068 | render time: 0h 46m 19.75s

The Spine Residential Compound

Cairo, Egypt
Concept Proposal





Project Size : 60,000 m2
Project Budget : 350 Million EGP
Client : General Department for Military Works – Ministry of Defense
Scope of Work : Design Consultancy Services

The Military Social Club

6th October City, Egypt

The Military Social Club is developed in 6th of October City on area of 60,000 sqm. The club includes Main Building, Administration Building, Multi-purpose hall, ballrooms, 4 squash courts, 3 tennis courts, 3 multi-use courts, health club, swimming pool, kids' playground, food court area and mosque.

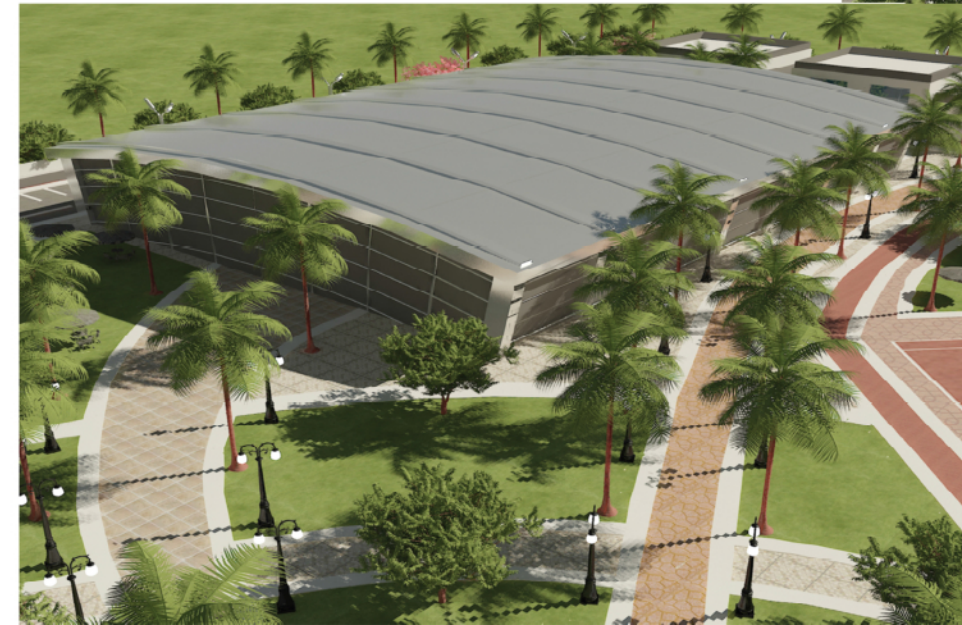
KAF is assigned as the project Main Consultant and the scope of work includes master plan design, architecture, structural, MEP Systems, infrastructure and Landscape design. In addition to periodical site supervision during the construction stage.





The Military Social Club

6th October City, Egypt





Project Size : 70,000 m2
Project Budget : 400 Million EGP
Client : General Department for Military Works – Ministry of Defense
Scope of Work : Design Consultancy Services

The Military Youth Social Club

6th October City, Egypt

The Military Social Club is developed in 6th of October City on area of 70,000 sqm. The club includes Main Building, Administration Building, Multi-purpose hall, ballrooms, 4 squash courts, 3 tennis courts, 8 multi-use courts, health club, SPA, gymnasium, swimming pool, kids' playground, food court area and mosque.

KAF is assigned as the project Main Consultant and the scope of work includes master plan design, architecture, structural, MEP Systems, infrastructure and Landscape design. In addition to periodical site supervision during the construction stage.



Al Khartoum Palace,

Al Khartoum Palace is a luxurious residential palace for diplomatic VIP guests. The palace consists of basement, ground floor, 2 floors and roof floor.

The palace consists of reception area at each floor, Dining Hall with capacity of 60 guests, Dining Room with capacity of 20 guests, 7 guest rooms, 2 suites, Presidential Suite, Spa and Health club, offices, Clinic in addition to roof terraces.

The project budget is estimated at 10 Million USD.

Project Budget : 10 Million USD
Scope of Work : Design Consultancy Services
Construction Supervision Consultancy Services



Al Khartoum Palace,
Sudan

DESIGN
CONCEPT





Al Khartoum Palace,
Sudan

DESIGN
CONCEPT





Al Khartoum Palace,
Sudan



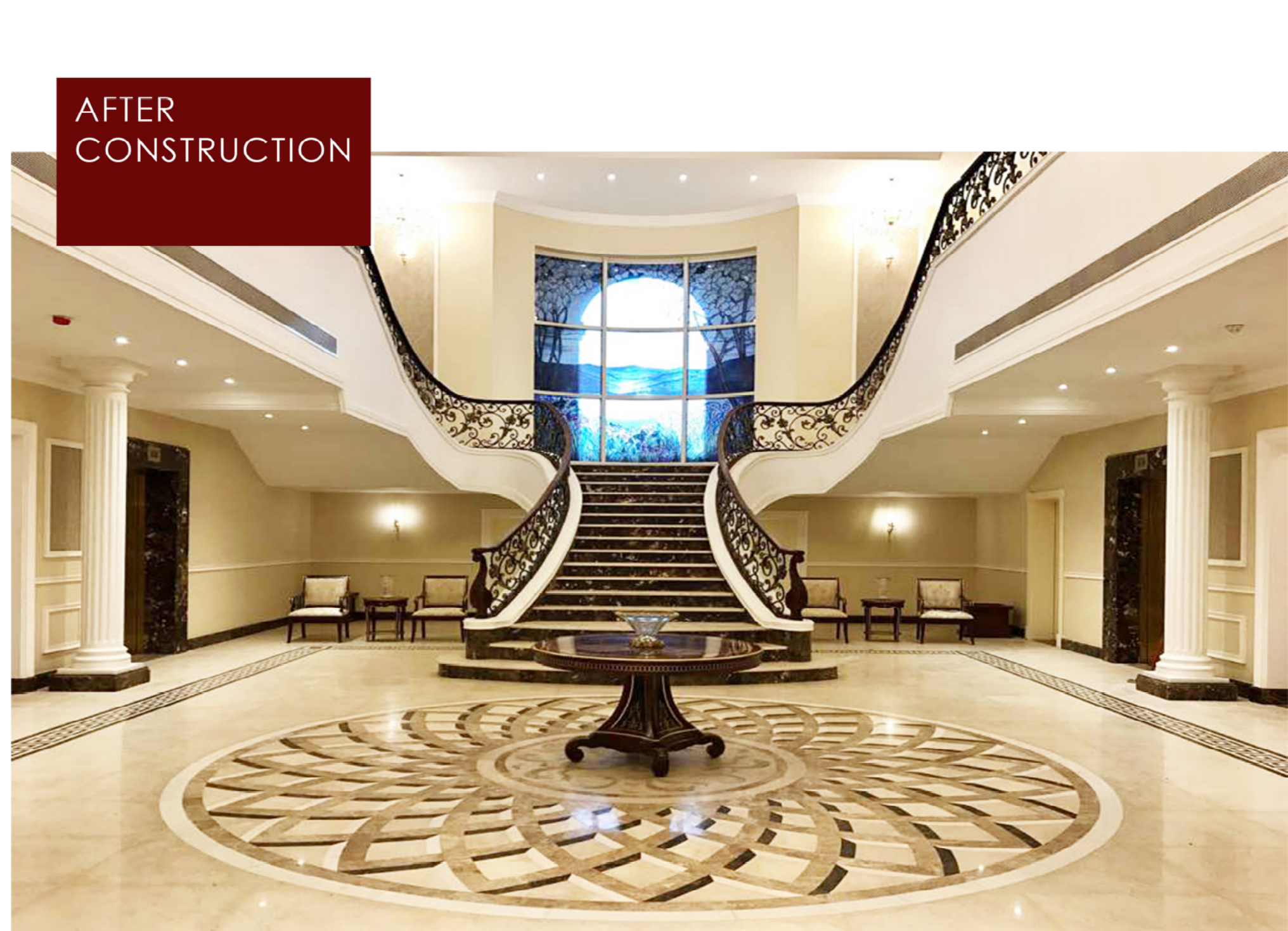
AFTER
CONSTRUCTION





DESIGN
CONCEPT

Al Khartoum Palace,
Sudan



AFTER
CONSTRUCTION

Al Khartoum Palace, Sudan



DESIGN
CONCEPT

AFTER
CONSTRUCTION

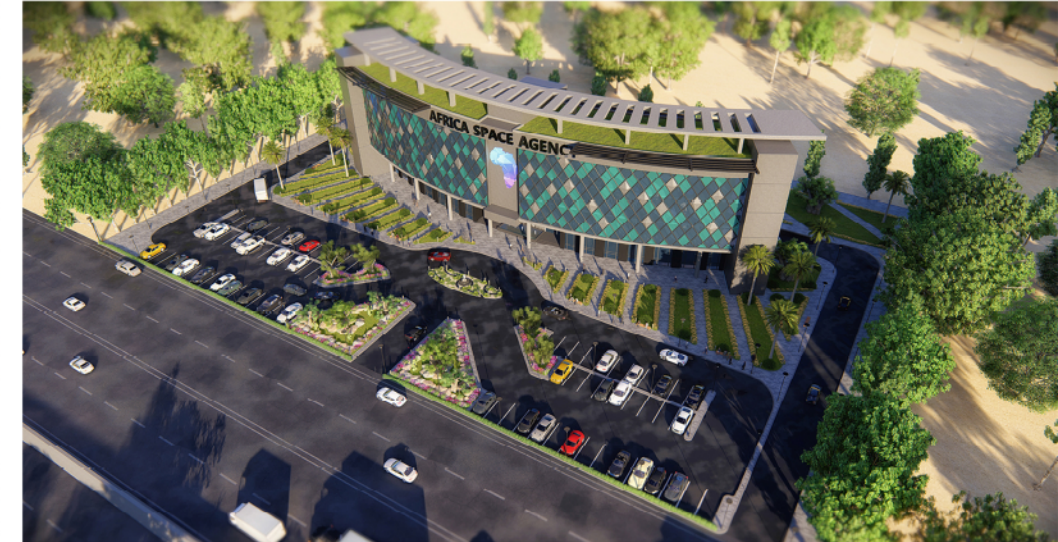




Orouba Palace

Cairo, Egypt





OFFICE BUILDING

OFFICE BUILDING

2ND RING RD, EGYPT





OFFICE BUILDING

2ND RING RD, EGYPT





OFFICE BUILDING

OFFICE BUILDING

2ND RING RD, EGYPT



OFFICE BUILDING

Cairo, Egypt



OFFICE BUILDING

The building is an architectural company located in Cairo Heliopolis.

The design concept is inspired from the the owner modern design mood with a touch of classy and cheerful colors which will be applied inside and outside the building.

The building includes basement,ground and two upper floors .





OFFICE BUILDING

CAIRO, EGYPT





www.kafconsultant.com

business@kafconsultant.com

+20 109999422

+20 222672009